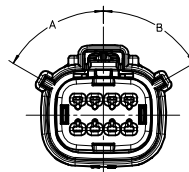
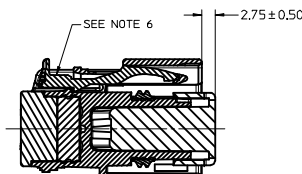


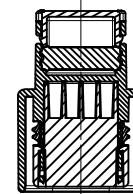
ASSEMBLY PART NUMBER	CPA	COLOR	KEYING OPTION	DIMENSIONS (DEGREES)		CAVITY TYPE & STATUS (X = PLUGGED)												
				A	B	1	2	3	4	5	6	7	8					
33472-0801	-	BLACK	A	60	60													
33472-0802	-	LT. GRAY	B	60	25													
33472-0803	-	BROWN	C	25	60													
33472-0804	-	GREEN	D	25	25													
33472-0805	-	BLACK	D	25	25													
33472-0806	YES	BLACK	A	60	60													
33472-0807	YES	LT. GRAY	B	60	25													
33472-0808	YES	BROWN	C	25	60													
33472-0809	YES	GREEN	D	25	25													
33472-0810	YES	CUSTOM	TBD															
33472-0811	-	BLACK	A	60	60						X							
33472-0812	-	LT. GRAY	B	60	25						X							
33472-0813	-	BROWN	C	25	60						X							
33472-0814	-	GREEN	D	25	25						X							
33472-0815	-	CUSTOM	TBD								X							
33472-0816	YES	BLACK	A	60	60						X							
33472-0817	YES	LT. GRAY	B	60	25						X							
33472-0818	YES	BROWN	C	25	60						X							
33472-0819	YES	GREEN	D	25	25						X							
33472-0820	YES	CUSTOM	TBD								X							
33472-0821	-	BLACK	A	60	60					X	X							
33472-0822	-	LT. GRAY	B	60	25					X	X							
33472-0823	-	BROWN	C	25	60					X	X							
33472-0824	-	GREEN	D	25	25					X	X							
33472-0825	-	CUSTOM	TBD							X	X							
33472-0826	YES	BLACK	A	60	60					X	X							
33472-0827	YES	LT. GRAY	B	60	25					X	X							
33472-0828	YES	BROWN	C	25	60					X	X							
33472-0829	YES	GREEN	D	25	25					X	X							
33472-0830	YES	CUSTOM	TBD							X	X							
33472-0831	-	BLACK	A	60	60	X				X	X							
33472-0832	-	LT. GRAY	B	60	25	X				X	X							
33472-0833	-	BROWN	C	25	60	X				X	X							
33472-0834	-	GREEN	D	25	25	X				X	X							
33472-0835	-	CUSTOM	TBD			X				X	X							
33472-0836	YES	BLACK	A	60	60	X				X	X							
33472-0837	YES	LT. GRAY	B	60	25	X				X	X							
33472-0838	YES	BROWN	C	25	60	X				X	X							
33472-0839	YES	GREEN	D	25	25	X				X	X							
33472-0840	YES	CUSTOM	TBD			X				X	X							
33472-0841	-	BLACK	A	60	60	X				X	X							X
33472-0842	-	LT. GRAY	B	60	25	X				X	X							X
33472-0843	-	BROWN	C	25	60	X				X	X							X
33472-0844	-	GREEN	D	25	25	X				X	X							X
33472-0845	-	CUSTOM	TBD			X				X	X							X
33472-0846	YES	BLACK	A	60	60	X				X	X							X
33472-0847	YES	LT. GRAY	B	60	25	X				X	X							X
33472-0848	YES	BROWN	C	25	60	X				X	X							X
33472-0849	YES	GREEN	D	25	25	X				X	X							X
33472-0850	YES	CUSTOM	TBD			X				X	X							X
33472-0851	-	BLACK	A	60	60	X	X	X	X	X	X	X	X	X	X	X	X	X
33472-0852	-	LT. GRAY	B	60	25	X	X	X	X	X	X	X	X	X	X	X	X	X
33472-0853	-	BROWN	C	25	60	X	X	X	X	X	X	X	X	X	X	X	X	X
33472-0854	-	GREEN	D	25	25	X	X	X	X	X	X	X	X	X	X	X	X	X
33472-0855	-	BLACK	D	25	25	X	X	X	X	X	X	X	X	X	X	X	X	X
33472-0856	YES	BLACK	A	60	60	X				X	X							X
33472-0857	YES	BLACK	A	60	60	X	X			X	X							X
33472-0858	YES	BLACK	A	60	60	X	X	X		X	X							X
33472-0859	-	BLACK	A	60	60	X	X	X		X	X							X
33472-0860	-	BLACK	D	25	25	X				X								X
33472-0861	-	BLACK	A	60	60	X				X								X
33472-0862	-	BLACK	A	60	60	X				X	X							X
33472-0863	-	BLACK	A	60	60	X				X	X							X
33472-0864	-	BLACK	A	60	60	X				X	X							X



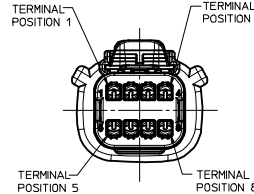
KEYING OPTION
SEE TABLE
SCALE 2:1



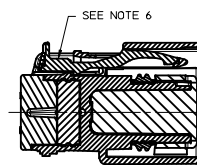
SECTION B-B
(RECEPTACLE INSERT SHOWN
IN PRE-LOCK POSITION)
SEE NOTE 2



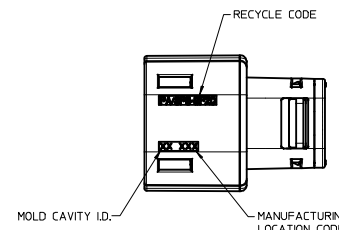
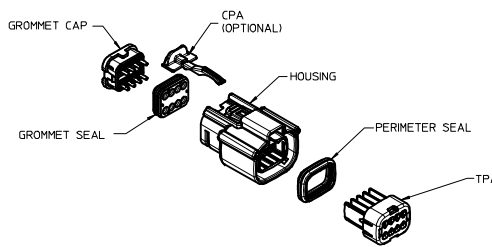
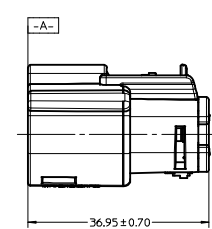
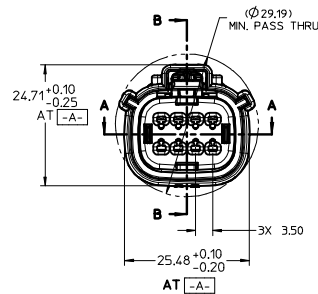
SECTION A-A



REAR VIEW
(WIRE HARNESS SIDE)



SECTION B-B
(RECEPTACLE INSERT SHOWN
IN FULL-LOCK POSITION)
SEE NOTE 2



NOTES: UNLESS OTHERWISE SPECIFIED

- DESIGNED TO MATE WITH BLADE HOUSING ASSEMBLY SPECIFIED IN USCAR CHARTED DRAWING SD-33482-081 OR DEVICE CONNECTION AS SPECIFIED IN MOLEX DRAWING 150-S-008-2-702.
- ASSEMBLY SHIPPED WITH RECEPTACLE INSERT IN PRE-LOCK POSITION (SEE SECTION B-B PRE-LOCK). UPON FULL TERMINAL ASSEMBLY, EACH RECEPTACLE INSERT MUST BE SNAPPED INTO ITS FINAL-LOCK POSITION.
- FOR RECEPTACLE TERMINALS TO BE USED WITH THIS ASSEMBLY, SEE DRAWING SD-33012-002.
- SYSTEM TO BE USED WITH WIRE WITH DIAMETER RANGE OF 15mm to 2.5mm.
- ASSEMBLIES SHALL CONFORM TO (BULK) PACKAGING SPECIFICATION PK-31300-435
ASSEMBLIES SHALL CONFORM TO (CELL PACK) PACKAGING SPECIFICATION PK-31300-903

- OPTIONAL CPA SHOWN IN ALL VIEWS. SEE TABLE FOR SPECIFIC ASSEMBLY OPTION AND NUMBER. CPA MUST BE INSERTED TO THE PRE-LOCK POSITION, AS SHOWN IN SECTION B-B. WHEN CORRECTLY SEATED THE CPA DOES NOT MOVE FREELY. ENGAGEMENT FORCE TO MOVE CPA FROM PRE-LOCK TO FINAL LOCK POSITION, WHEN UNMATED: 40N MN. DISENGAGEMENT FORCE TO MOVE CPA FROM FINAL LOCK TO PRE-LOCK POSITION: 3N MN.
- SPS/NYLON BLEND, 20% GLASS FILLED.
- SHALL CONFORM TO PRODUCT SPECIFICATION PS-33472-000
- PACKAGING: IN THE EVENT THAT INSERT IS FOUND IN THE SEATED (FINAL LOCK) POSITION, REFER TO MOLEX SPECIFICATION PS-34646-001 AVAILABLE AT WWW.MOLEX.COM
- ASSEMBLY CONFORMS TO SAE/USCAR-2 REV 4 WITH THE FOLLOWING EXCEPTIONS:
TPA REMOVAL FROM FINAL LOCK TO PRE-LOCK POSITION SHALL NOT EXCEED 130 NEWTONS.

REDRAWN IEC NO. UAU2009-0218 2008/09/04 DRAWN BY: CHYKOSVERZYL 2008/09/04 CHECKED BY: APPROV: IKOSHY 2008/09/05	QUALITY SYMBOLS ▽=0 ▽=0	GENERAL TOLERANCES (UNLESS SPECIFIED) 4 PLACES ± mm ± INCH 3 PLACES ± 0.10 ± --- 2 PLACES ± 0.3 ± --- 1 PLACE ± 0.3 ± --- ANGULAR ± 3 °	DIMENSION STYLE MM ONLY SCALE 2:1 DESIGN UNITS METRIC THIRD ANGLE PROJECTION	
	DRAWN BY: D. MARCOUX DATE: 06-13-02 CHECKED BY: DGRIFITHS DATE: 06-13-02 APPROVED BY: FHOLUB DATE: 06-13-02	MATERIAL NO. SEE TABLE DOCUMENT NO. SD-33472-081 MOLEX INCORPORATED	SHEET NO. 1 OF 2	THIS DRAWING CONTAINS INFORMATION THAT IS PROPRIETARY TO MOLEX INCORPORATED AND SHOULD NOT BE USED WITHOUT WRITTEN PERMISSION

20 19 18 17 16 15 14 13 12 11 10 9 8 7 6 5 4 3 2 1

ASSEMBLY PART NUMBER	CPA	COLOR	KEYING OPTION	DIMENSIONS (DEGREES)		CAVITY TYPE & STATUS (X = PLUGGED)														
				A	B	1	2	3	4	5	6	7	8							
33472-0865	-	BLACK	A	60	60	X														
33472-0866	-	BLACK	A	60	60		X	X			X	X								X
33472-0867	-	BLACK	A	60	60	X		X			X	X								
33472-0868	-	BLACK	A	60	60							X	X							X
33472-0869	-	BLACK	A	60	60							X	X							X
33472-0870	-	BLACK	A	60	60	X		X			X	X							X	X

REDRAWN IEC NO: UAU2009-0218 DRAWN: DGRIFITHS 2008/09/04 CHECKED: SVERZYL 2008/09/04 APPR: IKOSHY 2008/09/05	QUALITY SYMBOLS	GENERAL TOLERANCES (UNLESS SPECIFIED)	DIMENSION STYLE	SCALE	DESIGN UNITS	THIRD ANGLE PROJECTION																	
	$\nabla=0$ $\nabla=0$	<table border="1"> <tr> <th></th> <th>mm</th> <th>INCH</th> </tr> <tr> <td>4 PLACES</td> <td>±---</td> <td>±---</td> </tr> <tr> <td>3 PLACES</td> <td>±---</td> <td>±---</td> </tr> <tr> <td>2 PLACES</td> <td>±0.10</td> <td>±---</td> </tr> <tr> <td>1 PLACE</td> <td>±0.3</td> <td>±---</td> </tr> </table>		mm	INCH	4 PLACES	±---	±---	3 PLACES	±---	±---	2 PLACES	±0.10	±---	1 PLACE	±0.3	±---	MM ONLY	1:1	METRIC			
		mm	INCH																				
	4 PLACES	±---	±---																				
3 PLACES	±---	±---																					
2 PLACES	±0.10	±---																					
1 PLACE	±0.3	±---																					
DESCRIPTION	<table border="1"> <tr> <td>DRAWN BY</td> <td>DATE</td> <td>TITLE</td> </tr> <tr> <td>D. MARCOUX</td> <td>06-13-02</td> <td>MX150 RECEPTACLE CONN ASSEMBLY 2 ROW SEALED 8 WAY</td> </tr> <tr> <td>CHECKED BY</td> <td>DATE</td> <td></td> </tr> <tr> <td>DGRIFITHS</td> <td>06-13-02</td> <td></td> </tr> <tr> <td>APPROVED BY</td> <td>DATE</td> <td></td> </tr> <tr> <td>FHOLUB</td> <td>06-13-02</td> <td></td> </tr> </table>	DRAWN BY	DATE	TITLE	D. MARCOUX	06-13-02	MX150 RECEPTACLE CONN ASSEMBLY 2 ROW SEALED 8 WAY	CHECKED BY	DATE		DGRIFITHS	06-13-02		APPROVED BY	DATE		FHOLUB	06-13-02		MATERIAL NO.	DOCUMENT NO.	MOLEX INCORPORATED	
DRAWN BY	DATE	TITLE																					
D. MARCOUX	06-13-02	MX150 RECEPTACLE CONN ASSEMBLY 2 ROW SEALED 8 WAY																					
CHECKED BY	DATE																						
DGRIFITHS	06-13-02																						
APPROVED BY	DATE																						
FHOLUB	06-13-02																						
DRAFT WHERE APPLICABLE MUST REMAIN WITHIN DIMENSIONS	SEE TABLE	SD-33472-081	SHEET NO.	2 OF 2																			
THIS DRAWING CONTAINS INFORMATION THAT IS PROPRIETARY TO MOLEX INCORPORATED AND SHOULD NOT BE USED WITHOUT WRITTEN PERMISSION																							

19 18 17 16 15 14 13 12 11 10 9 8 7 6 5 4 3 2 1